

Level 1 Course Guide 2023





Welcome

from Sam Wright

Hello and welcome to Selby College's Level 1 Course Guide for September 2023. We're delighted that you are considering studying with us and hope that you are able to find all the information you need within this guide.

Our ethos has always been about providing a well-rounded education for our students based on their individual choices, capabilities and aspirations – ensuring that they can reach their full potential and achieve their future ambitions, whatever study route they may take.

Whatever you choose to study, our highly-qualified, friendly and supportive staff will be there to support you every step of the way.

Our programmes start from Level 1, with the courses included in this brochure, and go right up to Level 6, meaning you could even go on to achieve a full degree, right here at Selby College.

In March 2022, our College merged with Wakefield College to officially form the Heart of Yorkshire Education Group. Together, we are able to bring many new benefits to our learners including an expansive course offering, enhanced support services and increased enrichment opportunities – to name a few.

Don't just take our word for it, come and see what we have to offer at one of our upcoming Open Events, which are listed on page 20. On Saturday 25th February, from 10am to 12 noon, we'll be offering taster sessions for the courses listed in this brochure and we'd love to see you there. Find out more on page 20.

In the meantime, if you have any questions or need any more information, please call our Student Services team on **01757 211040**, email info@selby.ac.uk, or visit our website www.selby.ac.uk.

Sam Wright

Principal and Chief Executive



Heart of Yorkshire
Education Group

Your Study Programme



Coming to College is more than just a course. Get the most out of your time at College with a full programme of study, supported by Student Central.

Support

You'll have personal and group tutorials with your tutors, as well as further support from our highly skilled and dedicated team as needed.

Work Experience Placements

Every student at College has the opportunity to undertake meaningful work experience activities during their time at College.

PEEP

Personal, Employability, Enrichment and Progress (PEEP) programme designed to cover a wide range of events and activities.

English & Maths

You'll continue to study English and Maths until you achieve a Grade (between GCSE and 9-4). This will be timetabled to fit in alongside your course.

Course Levels Explained

Students starting at Selby College after leaving school will be able to study a range of courses from Entry Level up to Level 3 depending on their qualifications, with the option to progress to a degree-level course (Levels 4, 5 & 6) across our three campuses, or head to university, or progress into employment.

Level	Duration	What it means
Entry Level	Up to 1 Year	No formal entry requirements for these programmes, which are designed to provide you with essential life and study skills. Following successful completion of an Entry Level programme, learners can progress on to a Level 1 course.
Level 1	1 Year	You will need to have gained Grades 1 and 2 in your GCSEs to study a Level 1 programme. These will build on your existing skills and upon successful completion, allowing you to progress to a Level 2 course.
Level 2	1 or 2 Years	Equivalent to GCSE Grades 4-9 and you will be expected to have achieved at least four GCSEs at Grade 3 or above to enrol on to one of these programmes. Successful completion will pave the way for you to further your studies at Level 3.
Level 3	1 to 2 Years	You will need to have achieved at least five GCSE passes at Grade 4 or above to enrol, plus any specific entry requirements for individual courses. These courses vary in length, usually from 1-2 years depending on the programme.

Still unsure on which path is right for you?

Our team of expert Careers and Guidance Advisers will be able to support you to make your decision. When you have your interview they, alongside our experienced teaching staff, will discuss the best route for you based on your qualifications, expected grades and career goals.

If you have any questions, please don't hesitate to contact info@selby.ac.uk or call us on **01757 211000**.



How to Apply

Choosing your course and making an application

Making a decision...

Browse through the prospectus, come to our Open Events, and talk to your parents, friends, and teachers about the courses you're interested in to help you decide what you want to study. If you are unsure what you would like to do, call us and ask for a careers appointment or call our Course Information Team who will be happy to help.



Apply online

You apply online direct via the Selby College website:
www.selby.ac.uk/apply

Call our Admissions Team on **01757 211133** or email **admissions@selby.ac.uk** and we can email you an application form.



You will be invited for an interview for your first choice course only. This is your chance to ask questions about your chosen course and make sure the course is right for you.



Congrats! You receive an offer in writing

Whether you applied online or by form, you will need to accept the place by returning the acceptance form that came with your offer letter or call the Admissions Team on **01757 211133**.



Attend a New Student Day event in July to participate in course related activities, meet other students and find out what College life is like.



We will invite you into College to enrol for your chosen course in August, where you will become a full-time student.



Art, Design & Media

Level

Level 1

Duration

1 year

Awarding body

UAL



What you will study

Examples of some of the units / modules you may study are:

- + Exploratory Drawing and Mark Making
- + Ideas Generation
- + Printmaking
- + Surface Pattern
- + 3-D Material Exploration
- + Time-based Media
- + Communication Skills

Entry Requirements

No formal entry requirements.



Scan the QR code for more information on Art, Design & Photography courses.

Childcare, Early Years & Childhood Studies

Level

Level 1

Duration

1 year

Awarding body

CACHE



What you will study

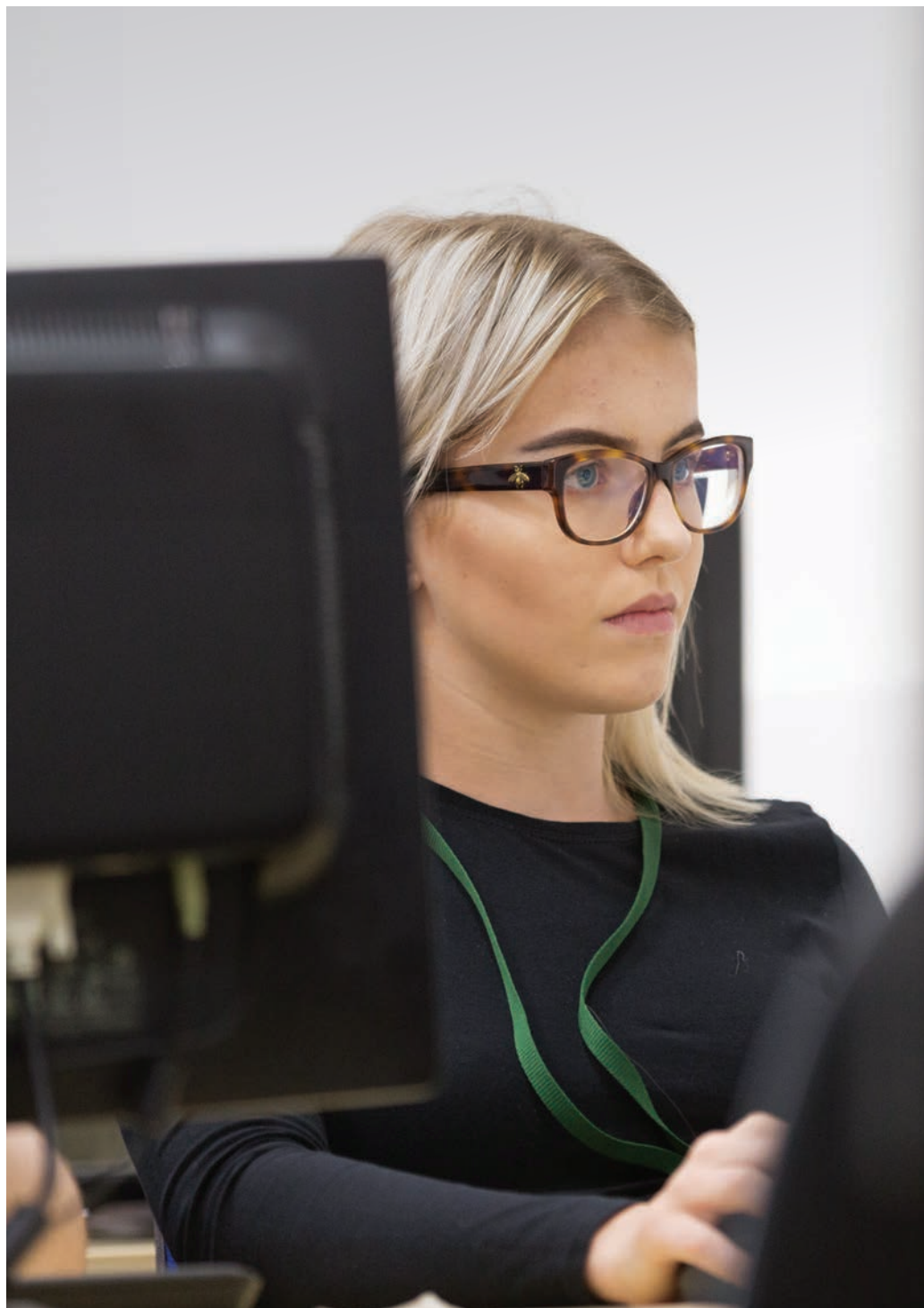
- + Sharing learning experiences with children
- + Health and safety with young children
- + Understanding learning and development through play
- + Growth and development of young children
- + Safeguarding children and young people

Entry Requirements

No formal entry requirements.



Scan the QR code for more information on Childcare, Early Years & Childhood Studies courses.



Computing & Digital Design

Level
Level 1

Duration
1 year

Awarding body
UAL



What you will study

You will study many interesting and exciting subjects including:

- + Introduction to material, processes & key skills in IT.
- + Introduction to contextual research in IT
- + Introduction to communication using IT
- + Solving 2D creative problems using IT
- + Solving 3D creative problems using IT
- + Solving time-based problems using IT
- + Final Major Assessment Project

Entry Requirements

No formal entry requirements.



Scan the QR code for more information on Computing courses.

Certificate in Construction Skills - Bricklaying

Level

Level 1

Duration

1 year

Awarding body

EAL



What you will study

- + Health and safety in a practical environment
- + Project in sustainability
- + Use of tools and equipment for bricklaying
- + Constructing a brick wall using bricklaying skills

Entry Requirements

3 GCSEs at Grade 9-2



Scan the QR code for more information on Construction courses.

Certificate in Construction Skills - Plumbing

Level

Level 1

Duration

1 year

Awarding body

EAL



What you will study

- + Health and safety in a practical environment
- + Project in sustainability
- + Developing plumbing skills
- + Starting work in construction
- + Basic tiling: equipment and materials

Entry Requirements

3 GCSEs at Grade 9-2



Scan the QR code for more information on Construction courses.

Certificate in Carpentry & Joinery

Level

Level 1

Duration

1 year

Awarding body

EAL



What you will study

- + Health and safety in a practical environment
- + Project in sustainability
- + Developing plumbing skills
- + Starting work in construction
 - How to set up and use a range of hand and power tools

Entry Requirements

3 GCSEs at Grade 9-2



Scan the QR code for more information on Construction courses.



Hairdressing and Beauty Therapy

Level

Level 1

Duration

1 year

Awarding body

VTCT



What you will study

- + Prepare and maintain salon treatment work areas
- + Contribute to the development of effective working
- + Ensure responsibility for actions to reduce risks to health and safety
- + Shampoo and condition hair
- + Prepare for hair services and maintain work areas
- + Assist with facial skin care treatments
- + Assist with day make-up
- + Assist with nail services
- + Blow dry hair
- + Plait and twist hair using basic techniques

Entry Requirements

No formal entry requirements.



Scan the QR code for more information on Hair & Beauty courses.

Health, Social Care & Wellbeing

Level

Level 1

Duration

1 year

Awarding body

NCFE

CACHE



What you will study

- + Development through Play
- + Equality and Diversity
- + Safeguarding
- + Human Growth and Development
- + Effective Communication

Entry Requirements

No formal entry requirements.



Scan the QR code for more information on
Health, Social Care & Wellbeing courses.

Introductory Diploma in Land-Based Studies

Level

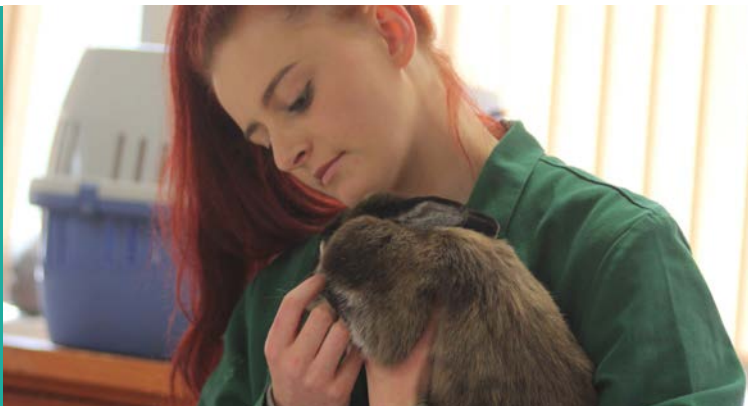
Level 1

Duration

1 years

Awarding body

Pearson BTEC



What you will study

Topics covered include the following:

- + Being organised
- + Developing a personal progression plan
- + Working with others
- + Researching a topic
- + Caring for and feeding animals
- + Moving and accommodating animals
- + Maintain the health of animals
- + Growing plants
- + Keeping plants healthy
- + Develop estate maintenance skills

Entry Requirements

No formal entry requirements, but an interest in the Land-Based Sector and working outdoors is essential.



Scan the QR code for more information on Animal Care courses.

Achieve, Celebrate, Excel (ACE)

Level

Level 1

Duration

2 years

Awarding body

BTEC



What you will study

You will study English and Maths. Your main programme will include some or all of the following:

- + Using public transport
- + Living in the community
- + Accessing leisure activities
- + Playing sport
- + Living in a diverse society
- + Understanding rights and responsibilities
- + Volunteering
- + Understanding relationships
- + Drug and alcohol awareness
- + Independent skills for living in the community
- + Personal learning skills
- + Understanding nutrition, performance and Healthy eating

- + Team leading skills
- + Communication Skills
- + Garden horticulture
- + Employability skills
- + Personal wellbeing
- + Building personal resilience

Entry Requirements

No formal entry requirements. However, students who are placed on this course are expected to attend all lessons, to adhere to all college rules and to complete all work to the best of their ability. If required, they will be expected to attend English and Maths lessons. Students are required to play an active role in lessons, and take part in discussions and group work. Students will be given some flexibility in how they choose to present work and being creative is encouraged.



Scan the QR code for more information on Achieve, Celebrate, Excel courses.

Your Journey, Your Career.
It starts here...

Open Events

Find out more about:
**A Levels, T Levels, Vocational Courses,
Apprenticeships and Foundation Learning**

Saturday 25 February 2023

10am to 12pm

Monday 19 June 2023

5pm to 7pm



Scan QR code for more
information and to register online



[selby.ac.uk](https://www.selby.ac.uk)

Additional Information

Careers Guidance

To make an appointment with one of the careers team, please call **01757 211000** or email **info@selby.ac.uk**.

Additional Learning Support

For more information, you can contact the Additional Support team on **01757 211000**.

Equal Opportunities For All

Selby College is committed to giving learners access to the services and facilities we offer. We oppose all forms of discrimination and strive to ensure all members of our community are treated equally and fairly.

Selby College will take all reasonable steps to provide the educational services and range of courses as described in this Level 1 Course Guide and in other related documents.

However, it does not guarantee the provision of such services. The provision of courses is dependent on there being sufficient demand to make their operation viable for the College to run.

At the time of publication (January 2023) all course titles and information provided were correct. Updates to this Prospectus will be made to the online version available at **www.selby.ac.uk**.

Safeguarding Policy

Selby College recognises its moral and statutory responsibility to safeguard and promote the welfare of students. We work to provide a safe and welcoming environment where students are respected and valued. We are alert to the signs of abuse and neglect and follow our procedures to ensure our students receive effective support, protection and justice. Selby College expects Governors, staff and volunteers working on behalf of the organisation to share this commitment.

Key Dates

2023

February

FEBRUARY

25

Open Event*

Saturday 25 February,
10am - 12pm

July

JULY

10

New Student Day

Monday 10 July

April

Have you submitted your application?

If not, do so as soon as possible.

Applications received by **1st May** will be given priority for an interview date.

August

GCSE Results released.

If you need help or advice about your next steps, get in touch to speak with our friendly and supportive team.

Enrolment begins on GCSE results day.

June

JUNE

19

Open Event

Monday 19 June,
5pm - 7pm

***We'll be running *Taster Sessions* at our *February Open Event* for all of the courses in this guide. Please email admissions@selby.ac.uk to book your place.**



Abbot's Road, Selby, North Yorkshire, YO8 8AT.

General Enquiries: t: 01757 211000 e: info@selby.ac.uk

Course Information: t: 01757 211133 e: admissions@selby.ac.uk

www.selby.ac.uk

Part of the:



Heart of Yorkshire
Education Group

www.heartofyorkshire.ac.uk